

2019 State Street Reconstruction Open House



St. Mark's Lutheran Church (Room 12)
3307 State Street
December 6, 2018

Introduction



- ☞ Project Limits / Scope
- ☞ Project Schedule
- ☞ Public Feedback
- ☞ Draft Street Layout
- ☞ Questions



Project Limits / Scope



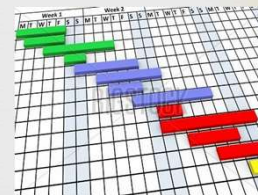
- ❧ Garfield Ave to ~ 300 ft. South of Hamilton Ave
- ❧ Utility and Pavement Reconstruction
- ❧ Sidewalk and Retaining Wall Replacement
- ❧ Intersection Improvements
- ❧ Trail Connections in Putnam Park
- ❧ Neighborhood Connection to Jaycette Park
- ❧ Increased Overall Corridor Safety
- ❧ Maintain Traffic Flow



Project Schedule



- ❧ 2018
 - ❧ Spring, Summer, Fall
 - ❧ Public Outreach
 - ❧ Data Collection
 - ❧ November, **December**, & January
 - ❧ Public Open House & Neighborhood Meetings
- ❧ 2019
 - ❧ January City Council Work Session
 - ❧ February City Council Approval
 - ❧ May/June Construction Start
 - ❧ Fall - Majority of Project Complete



Public Feedback


Walk Audits

November Putnam Heights Open House

November Third Ward Neighborhood Association Meeting

Walk Audit Responses

- ❧ Improving Pedestrian Crossings
- ❧ Pedestrian Comfort
- ❧ Increasing Sidewalk Width
- ❧ Reducing Vehicle Speeds
- ❧ Safety concerns at Roosevelt & Lexington



The map on the right shows an aerial view of a residential area. A central street is highlighted with a green line. Yellow arrows labeled 'PROJECT LIMITS' point to the top and bottom of this street. A pink box labeled 'FIRE STATION #5' is located on the right side of the street. Other streets are labeled with names like 'Roosevelt' and 'Lexington'.

November Putnam Heights Open House Responses

- ☞ Most Important Issues(1 to 5)
 - ☞ Improving Pedestrian Crossings (4.3)
 - ☞ Change in Intersection Control (3.9)
 - ☞ Increasing Sidewalk Width for Passing Ability (3.9)
 - ☞ Reducing Vehicle Speeds (3.7)

November Third Ward Neighborhood Association Meeting Responses

- ☞ Most Important Issues(1 to 5)
 - ☞ Improving Pedestrian Crossings (4.3)
 - ☞ Change in Intersection Control (4.0)
 - ☞ Provide Bicycle Connectivity (3.7)
 - ☞ Reducing Vehicle Speeds (3.7)

5 Yr. Crash Data

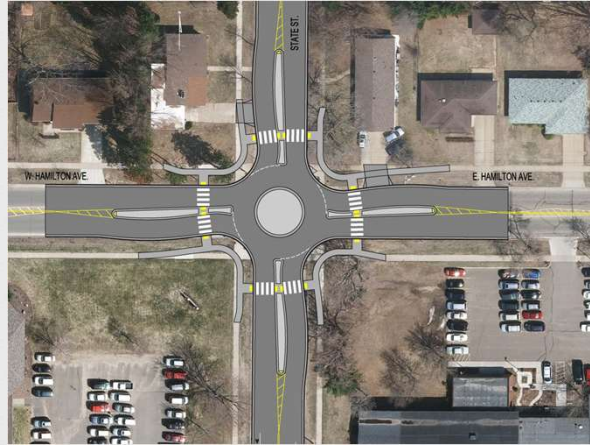
- 2013-2017 Crashes
- Identify Patterns
 - Rear Ends
 - Pedestrian/Bicycle
- High Crash Locations



Draft State Street Layout

- Layout Drawings
- Roundabout Control
- Lane Reduction & Pedestrian & Bicycle Enhancements

Hamilton Avenue



MacArthur Avenue



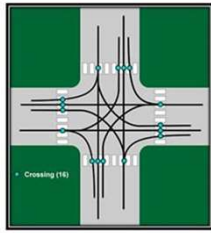
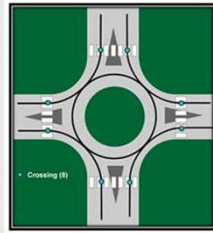
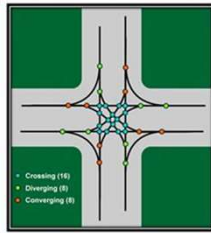
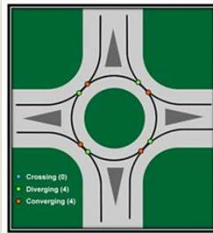


Roundabout Control



☞ Vehicle Conflict Points

☞ Pedestrian Conflict Points



☞ 8 vs 32

☞ 8 vs 16

☞ Roundabout = 0
Crossing Conflicts

☞ Roundabout = 1
conflict per lane

Lane Reduction & Bicycle/Pedestrian Enhancements



☞ Current Lane Configuration

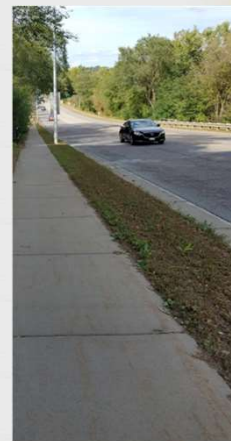
☞ Three Lanes/Four Lanes @ 42-52 ft. Face-to-Face

☞ Reduce Lanes

☞ Two Lanes with bicycle lanes and roundabouts

☞ Roundabouts

☞ Wider Sidewalks, Wider
Boulevards, Refuge Islands,
Designated Bike Lanes



Additional Input & Feedback



Comment Forms Available
Website

Questions?



Thank You for Attending